

## CREDIT DESIGNATION

Temple University Hospital – Abdominal Transplant Program, provider #1559, is approved as a provider for social work continuing education by the Association of Social Work Boards (ASWB), [www.aswb.org](http://www.aswb.org), through the Approved Continuing Education (ACE) program. Temple University Hospital – Abdominal Transplant Program maintains responsibility for the program. ASWB Approval Period: 11/29/2018 – 11/29/2021. Social workers should contact their regulatory board to determine course approval. Social Workers participating in this course will receive five continuing education clock hours.

## CONFLICT OF INTEREST

Faculty and others who have the ability to control the content of continuing education activities sponsored by Temple Health are expected to disclose to attendees whether they have any real or apparent conflicts of interest or other relationships related to the content of their presentations.

## FOR MORE INFORMATION

For questions relating to the Kidney Transplant Symposium, please contact Liz Lowry at [Elizabeth.Lowry@tuhs.temple.edu](mailto:Elizabeth.Lowry@tuhs.temple.edu) or visit [TempleHealth.org/Transplant](http://TempleHealth.org/Transplant).

Thank you to our sponsors.



SANOFI GENZYME

Temple Health refers to the health, education and research activities carried out by the affiliates of Temple University Health System (TUHS) and by the Lewis Katz School of Medicine at Temple University. TUHS neither provides nor controls the provision of health care. All health care is provided by its member organizations or independent health care providers affiliated with TUHS member organizations. Each TUHS member organization is owned and operated pursuant to its governing documents.

**Non-discrimination notice:**  
It is the policy of Temple University Hospital, Inc. that there shall be no exclusion from, or participation in, and no one denied the benefits of, the delivery of quality medical care on the basis of race, ethnicity, religion, sexual orientation, gender, gender identity/expression, disability, age, ancestry, color, national origin, physical ability, level of education, or source of payment.

FY19-1032 1/20

FIRST CLASS MAIL  
U.S. POSTAGE  
PAID  
PHILA, PA  
PERMIT # 5140

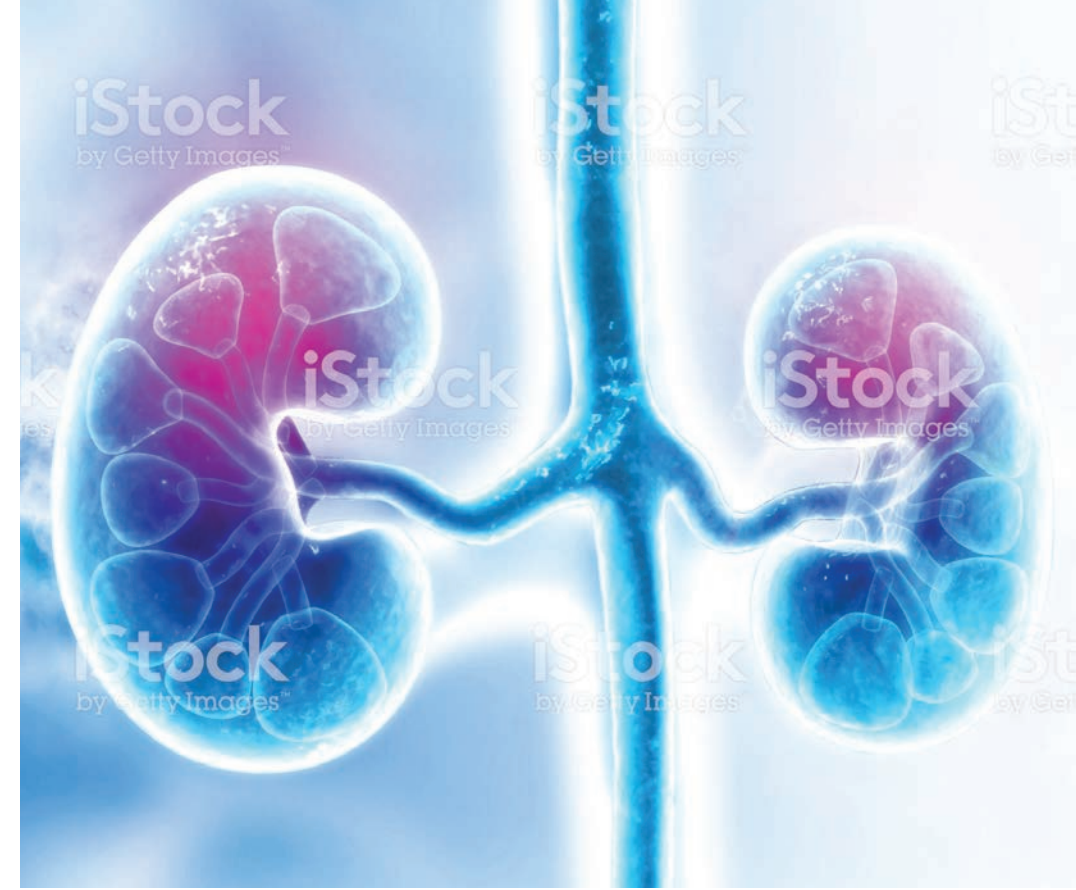
Abdominal Organ  
Transplant Program  
**TEMPLE HEALTH**

Temple Kidney Transplant Program  
Parkinson Pavilion, C010  
3401 North Broad Street  
Philadelphia, PA 19140

# KIDNEY TRANSPLANT SYMPOSIUM 2020

NAVIGATING THROUGH TRANSPLANT

Tuesday, June 9th



## KIDNEY TRANSPLANT SYMPOSIUM 2020

NAVIGATING THROUGH TRANSPLANT

Abdominal Organ  
Transplant Program  
**TEMPLE HEALTH**

# KIDNEY TRANSPLANT SYMPOSIUM 2020: NAVIGATING THROUGH TRANSPLANT

**DATE:** Tuesday, June 9, 2020

**TIME:** 7:30 AM – 4:00 PM

**LOCATION:** Medical Education and Research Building, Auditorium 105  
Lewis Katz School of Medicine at Temple University  
3500 N. Broad Street, Philadelphia, PA

**CONTINUING** 6.5 CEs

**EDUCATION:** Attendees will receive a printed certificate for 6.5 continuing education credits within two weeks via registration email, pending completion of all courses and participation evaluation.

**RSVP:** By May 31st  
<http://bit.ly/templekidney2020>

**This is a free event. To request accommodations for individuals with disabilities, contact Liz Lowry at [Elizabeth.Lowry@tuhs.temple.edu](mailto:Elizabeth.Lowry@tuhs.temple.edu).**

## WHO SHOULD ATTEND

Nurses, social workers, dialysis center staff and other healthcare professionals involved in the care of patients before, during and after kidney transplantation.

## PROGRAM DESCRIPTION

Kidney Transplant Symposium 2020: Navigating Through Transplant will address topics in the continuum of care for patients who require a kidney transplant. The emphasis will be on optimizing clinical management, patient education and support before and after kidney transplantation. The symposium will include presentations by members of the Temple Kidney Transplant Program and personal accounts from living donors and recipients.

## LEARNING OBJECTIVES

1. Define transplant for patients with renal failure.
2. State different types of dialysis modality options.
3. Explain how cardiovascular disease and diabetes impact kidney disease and consideration for kidney transplant.
4. Describe the sociodemographic factors that influence a patient's ability to receive a kidney transplant.
5. Discuss how your immune system affects your transplant.
6. Summarize immunosuppression and other pharmacological modalities in kidney disease/ transplant.
7. Describe the transplant phases a patient is required to attend prior to receiving a kidney transplant.
8. Explain how infectious diseases can impact kidney transplantation and how healthcare providers can prevent it.
9. Demonstrate understanding of different types of cognitive impairment in relation to moving through the transplant process.
10. Consider the impact of how certain abused substances can affect a patient's chance of receiving a kidney transplant.
11. Discuss strategies to support patients' success in coping with challenges post-transplant.
12. Break down, recall, and explain real life experiences with transplant.
13. Review all learning objectives of the day.

**For more information, visit [TempleHealth.org/Transplant](http://TempleHealth.org/Transplant)**

## AGENDA JUNE 2020

Eventbrite Bar Code will be used to sign you in at registration.

7:30 – 8:30 AM	Welcome and Registration
8:30 – 9:00 AM	Introduction to Temple Transplant Team & Concepts of Transplant <i>Antonio Di Carlo, MD, CM, FACS, FRCSC</i>
9:00 – 9:30 AM	"I'm on Dialysis, What Else Can I Do?" <i>Sunil Karhadkar, MD, FACS</i>
9:30 – 10:00 AM	Cardiovascular Disease and Metabolic Complications in the Kidney Transplantation <i>Serban Constantinescu, MD, PhD</i>
10:00 – 10:15 AM	Break
10:15 – 10:45 AM	Reducing Disparities in Access to Kidney Transplantation <i>Avrum Gillespie, MD</i>
10:45 – 11:15 AM	Immunology and Transplantation <i>Iris Lee, MD</i>
11:15 – 11:45 AM	Why Do I Need All This Medicine? <i>Adam Diamond, PharmD, BCPS</i>
11:45 AM – 12:15 PM	Lunch
12:15 – 12:45 PM	Transplant Process: From Referral to Transplant and Beyond <i>Tiffiney Carter BSN, RN; Mary Beth Lawrence, BSN, RN; John Mulligan, RN, MSN; Jenny Smith, BSN, RN</i>
12:45 – 1:15 PM	Infectious Disease and Kidney Transplantation <i>Aaron Mishkin, MD</i>
1:15 – 1:45 PM	Cognitive Impairment, What Difference Does it Make? <i>Christopher Combs, PhD</i>
1:45 – 2:00 PM	Break
2:00 – 2:30 PM	Substance Use and the Kidney Transplant Evaluation <i>William Brucker, MSW, LSW</i>
2:30 – 3:00 PM	Life After Transplant: Strategies for Success <i>Alex Kratchman, BSN, RN, CCTC Karen Vizza, BSN, RN</i>
3:00 – 3:30 PM	Panel of Patients
3:30 – 4:00 PM	Questions, Closing Remarks, Evaluations